

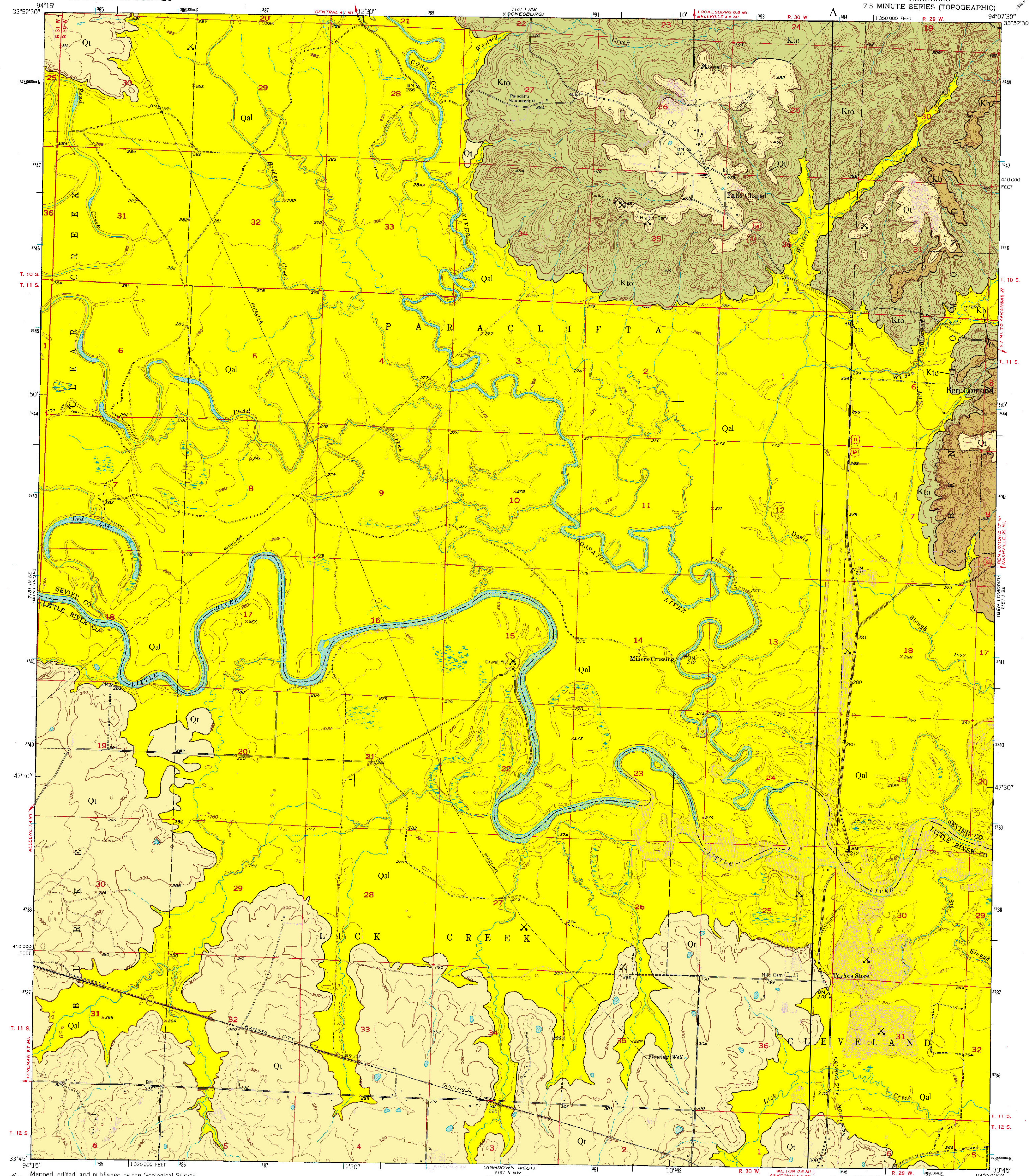
GEOLOGIC MAP OF THE FALLS CHAPEL QUADRANGLE, LITTLE RIVER AND SEVIER COUNTIES, ARKANSAS

Geology by William D. Hanson, Benjamin F. Clardy, and Steven L. Martin
1998
Arkansas Geological Commission, William V. Bush, State Geologist
Digital compilation by Steven L. Martin, William D. Hanson, and Tiffany L. Celis

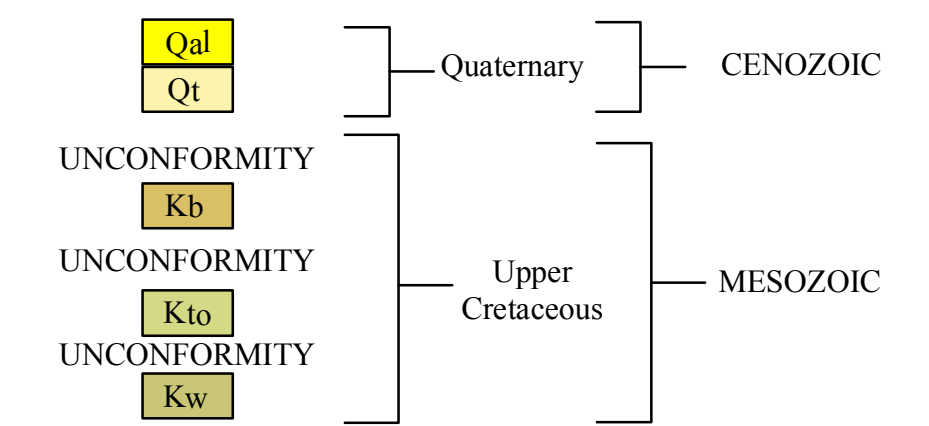
DIGITAL GEOLOGIC QUADRANGLE MAP
FALLS CHAPEL QUADRANGLE, ARKANSAS
DGM-AR-00279

UNITED STATES
DEPARTMENT OF THE INTERIOR
GEOLOGICAL SURVEY

FALLS CHAPEL QUADRANGLE
ARKANSAS
7.5 MINUTE SERIES (TOPOGRAPHIC)



Correlation of Map Units



Description of Map Units

- Qal** **Alluvium (Quaternary)**- Variably sized gravel overlain by unconsolidated sand, silt, and clay comprises the unit. This unit occurs in the floodplains of streams and rivers. The sediments form a rich loam and are excellent for agriculture. Gravels, primarily novaculite, originated in the Ouachita Mountain region and from local Cretaceous formations. Thickness varies from 0 to 25 feet. Areas of alluvium are presently receiving sediment deposition.
- Qt** **Terrace Deposit (Quaternary)**- Terrace deposits generally grade from basal gravel to silt and clay at the top. Gravels, primarily novaculite, originated in the Ouachita Mountain region and from local Cretaceous formations. Thicknesses are generally less than 50 feet. Terraces are topographic features which are former floodplains of nearby streams and/or rivers. The sediments form a rich loamy soil. The basal gravel is sometimes utilized for water-well production and gravel-mining operations.
- Kb** **Brownstown Marl (Upper Cretaceous)**- The Brownstown Marl consists of dark-gray calcareous clay, marl, and sandy marl. The unit is fossiliferous and weathers yellow to gray in color. Notable fossils are the (*Exogyra ponderosa* and *Inoceramus*). The outcrop belt extends from east of Arkadelphia, AR, southwest to the Arkansas-Oklahoma state line, and dips approximately 80 feet per mile to the south. The approximate thickness in the quadrangle is 150 feet. The unit was deposited in a nearshore marine environment and rests unconformably on the Tokio Formation.
- Kto** **Tokio Formation (Upper Cretaceous)**- The Tokio Formation consists of cross-bedded sand, gravel, gray clay, and volcanic ash. Basal cross-bedded gravels are approximately 30 feet thick. Minor sand and clay lenses occur within the gravel. Thinner beds (less than 1 foot in thickness) and lenses of gravel occur within the formation's sand intervals. The gravels range from pea-size to 6 inches in diameter and are composed of quartz, novaculite, sandstone, and quartzite. Iron-oxide-cemented conglomerates may be present locally. The cross-bedded sands are medium-to-fine-grained quartz with minor amounts of heavy minerals, glauconite, iron-oxide concretions, and rip-up clasts of gray clay. Sands weather yellow to orange-red in color. Gray clays are lignitic, pyritic, fossiliferous, and may contain leaf imprints. The volcanic ash is light gray to white and has altered to kaolinitic clay. The source area for much of the formation's sediment was the Ouachita Mountain region. The formation outcrop belt extends from near Arkadelphia, southwest to the Arkansas-Oklahoma state line, and dips to the south at approximately 200 feet per mile. The unit was deposited in a nearshore marine environment on an unconformable surface which separates it from the underlying Woodbine Formation (Upper Cretaceous).
- Kw** **Woodbine Formation (Upper Cretaceous)**- This Unit is found only in the subsurface. The Woodbine Formation consists of water-laid, cross-bedded tuffs, tuffaceous sands, gravel, and red and gray clay. Basal cross-bedded gravels are approximately 20 feet thick and form a 1/2 to 6 inches in diameter, well-rounded and are composed of novaculite, quartz, sandstone, and quartzite. Iron-cemented conglomerates may be present locally. Igneous rock pebbles and cobbles are interbedded within the tuffs. Unweathered tuffs range from the area between Murfreesboro and Lockesburg, Arkansas. The source area for the gravels was the Ouachita Mountain region west of the Arkansas-Oklahoma state line, and dips approximately 80 feet per mile to the south. The unit was deposited in a near-shore marine environment following a major unconformity which separates it from the underlying Trinity Group (Lower Cretaceous). The approximate thickness in the quadrangle is 30 feet.

Symbols

- Contact
- Gravel Pit

References

- Bush, W. V., and Clardy, B. F., 1971, Geologic Map of the Falls Chapel Quadrangle, Little River and Sevier Counties, Arkansas: Arkansas Geological Commission Open-File Report, scale 1:24,000.
- McFarland, J. D., 2004, Stratigraphic Summary of Arkansas: Arkansas Geological Commission Information Circular 36, 39p.
- Dane, C. H., 1929, Upper Cretaceous formation of southwestern Arkansas: Arkansas Geological Survey Bulletin 1, 215p.
- Miser, H. D., and Purdue, A. H., 1929, Geology of the DeQueen and Caddo Gap Quadrangles, Arkansas: U.S. Geological Survey, Bulletin 808, 195p., scale 1:125,000.
- Howard, J.M., 2006, Arkansas Mineral Commodity Database, in-house data, Arkansas Geological Commission.

DISCLAIMER

Although this map was compiled from digital data that was successfully processed on a computer system using ESRI ArcGIS 9.0 software at the Arkansas Geological Commission (AGC), no warranty, expressed or implied, is made by AGC regarding the unity of the data on any other system, nor shall the act of distribution constitute any such warranty. AGC does not guarantee this map or digital data to be free of errors or liability for interpretations from this map or digital data, or decisions based thereon.

The views and conclusions contained in this document are those of the authors and should not be interpreted as necessarily representing the official policies, either expressed or implied, of the Arkansas Geological Commission.

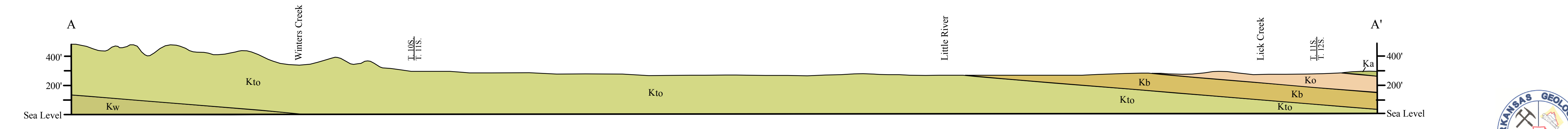
Mapped, edited, and published by the Geological Survey
Control by USGS and USC&GS
Culture and drainage in part compiled from aerial photographs taken 1949
Topography by plane-table methods 1950
Photonic projection, 1927 North American datum
10,000 foot grid based on Arkansas coordinate system, south zone
1000 metre Universal Transverse Mercator grid ticks, zone 16, shown in blue
Scale shown in blue
Scale shown in blue

SCALE 1:24,000
CONTOUR INTERVAL 10 FEET
DOTTED LINES REPRESENT 5-FOOT CONTOURS
NATIONAL GEODETIC VERTICAL DATUM OF 1929

THIS MAP COMPLIES WITH NATIONAL MAP ACCURACY STANDARDS
FOR SALE BY U. S. GEOLOGICAL SURVEY, DENVER, COLORADO 80226 OR RESTON, VIRGINIA 22092
AND ARKANSAS GEOLOGICAL COMMISSION, LITTLE ROCK, ARKANSAS 72204
A FOLDER DESCRIBING TOPOGRAPHIC MAPS AND SYMBOLS IS AVAILABLE ON REQUEST

Funded by the Arkansas Geological Commission in cooperation with the United States Geological Survey, STATEMAP Project No. 1434-94-A-1233

FALLS CHAPEL, ARK.
N3345-W9407.5/7.5
1990
AMS 7151 1 SW-SERIES Y884



GEOLOGIC CROSS SECTION A-A'
(Quaternary deposits not shown)
Horizontal scale 1:24,000
Vertical scale X5

Revision Date: July 2006
Digital Revision by: Tiffany L. Celis

